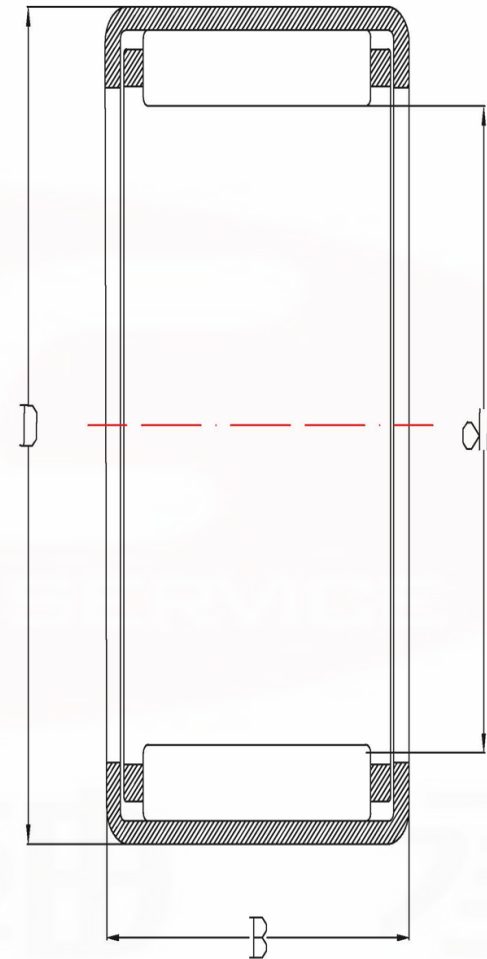
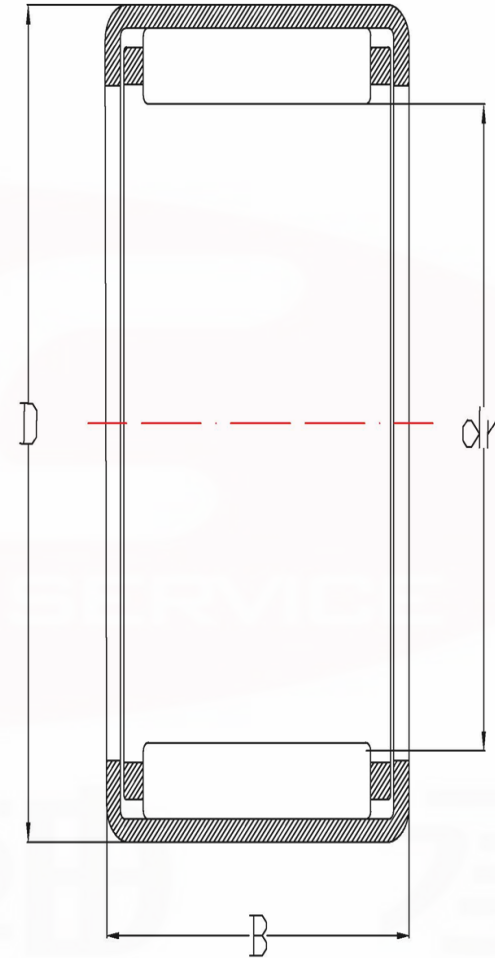


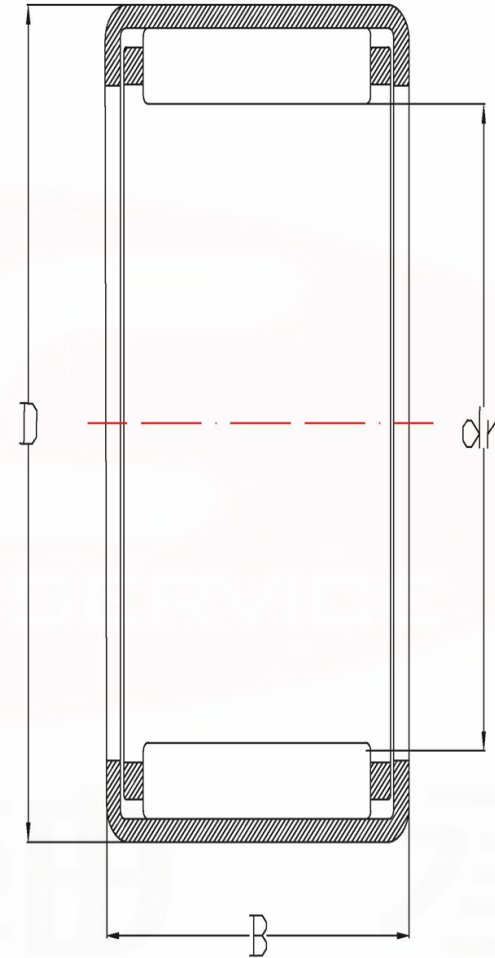
型號	主要寸法			基本定格荷重	重量
	dr	D	B	C	
TA810	8	15	10	360	6.1
TA815	8	15	15	560	9.4
TA820	8	15	20	780	12.7
TA912	9	16	12	520	8.1
TA916	9	16	16	670	11
TA1010	10	17	10	440	7.2
TA1012	10	17	12	570	8.8
TA1015	10	17	15	680	11.1
TA1020	10	17	20	950	15.1
TA1212	12	19	12	620	9.9
TA1215	12	19	15	740	12.5
TA1220	12	19	20	1040	17
TA1225	12	19	25	1310	21.5
TA1416	14	22	16	1020	19.5
TA1420	14	22	20	1320	24.5
TA1510	15	22	10	570	10.9
TA1512	15	22	12	720	13.2
TA1515	15	22	15	870	16.7
TA1520	15	22	20	1210	22.5
TA1525	15	22	25	1530	28
TA1616	16	24	16	1070	21.5
TA1620	16	24	20	1390	27
TA1715	17	24	15	950	18.6
TA1720	17	24	20	1330	25
TA1725	17	24	25	1680	31.5



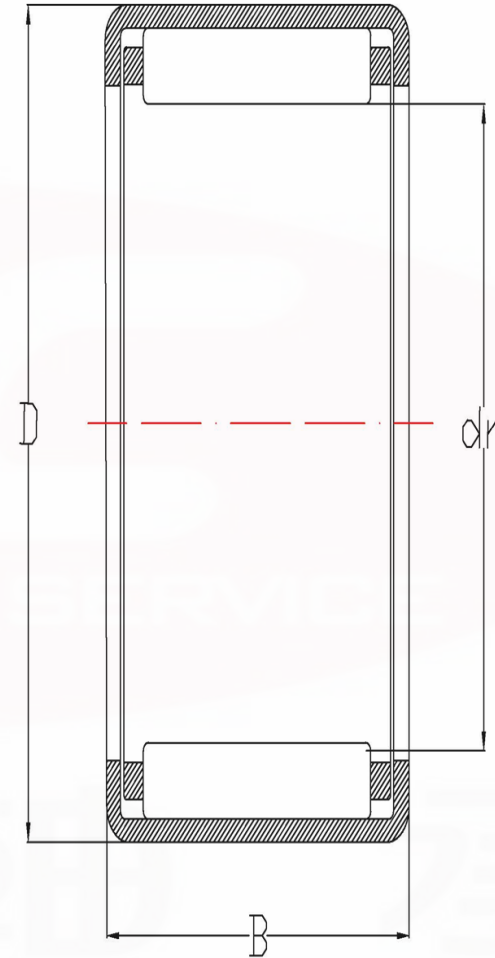
型號	主要寸法			基本定格荷重	重量
	dr	D	B	C	
TA1813	18	25	13	910	16.7
TA1815	18	25	15	990	19.5
TA1817	18	25	17	1150	22
TA1819	18	25	19	1310	25
TA1820	18	25	20	1380	26
TA1825	18	25	25	1750	33
TA1916	19	27	16	1180	24.5
TA1920	19	27	20	1530	31
TA2015	20	27	15	1020	21
TA2020	20	27	20	1420	28
TA2025	20	27	25	1800	35.5
TA2030	20	27	30	2150	43
TA202820	20	28	20	1600	32.5
TA2116	21	29	16	1290	26.5
TA2120	21	29	20	1670	34
TA2210	22	29	10	710	14.9
TA2215	22	29	15	1090	23
TA2220	22	29	20	1520	31
TA2225	22	29	25	1850	38
TA2230	22	29	30	2210	40
TA223016	22	30	16	1290	27.5
TA223020	22	30	20	1660	34.5
TA2420	24	31	20	1610	33.5
TA2428	24	31	28	2280	47
TA243216	24	32	16	1380	30
TA243220	24	32	20	1780	37.5
TA2510	25	33	10	840	18.6
TA2515	25	33	15	1320	29
TA2520	25	33	20	1840	39
TA2525	25	33	25	2240	48.5
TA2530	25	33	30	2690	58.5



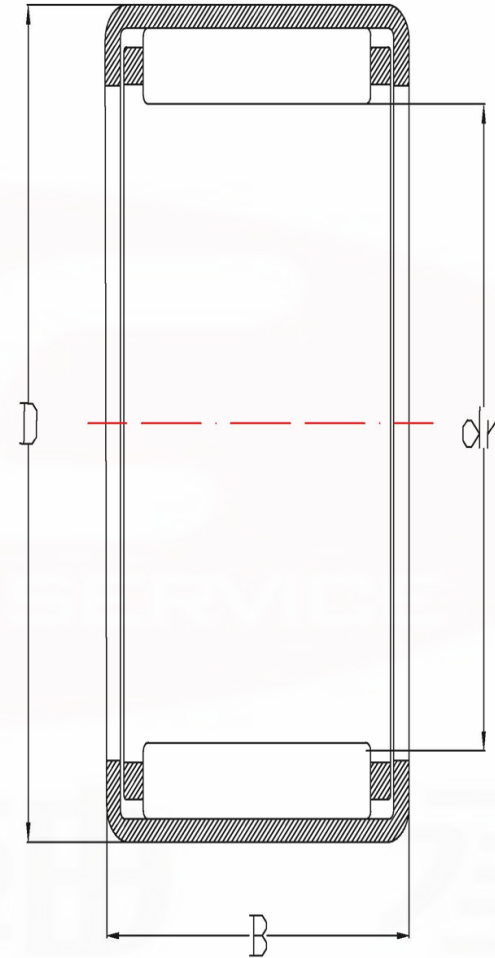
型號	主要寸法			基本定格荷重	重量
	dr	D	B	C	
TA2616	26	34	16	1470	32
TA2620	26	34	20	1900	40.5
TA2820	28	37	20	2020	47.5
TA2830	28	37	30	3060	72.5
TA2920	29	38	20	2100	49.5
TA2930	29	38	30	3180	75.5
TA3013	30	40	13	1360	35.5
TA3015	30	40	15	1650	41.5
TA3020	30	40	20	2330	56.5
TA3025	30	40	25	2960	71.5
TA3030	30	40	30	3400	85
TA3220	32	42	20	2400	59.5
TA3230	32	42	30	3660	91.5
TA3512	35	45	12	1490	37.5
TA3515	35	45	15	1820	47.5
TA3520	35	45	20	2560	64.5
TA3525	35	45	25	3250	82
TA3530	35	45	30	3760	98
TA3720	37	47	20	2630	68
TA3730	37	47	30	3870	103
TA3815	38	48	15	1860	50.5
TA3820	38	48	20	2620	69
TA3825	38	48	25	3320	87
TA3830	38	48	30	3990	106
TAW3845	38	48	45	5230	155
TA4015	40	50	15	1910	52.5
TA4020	40	50	20	2690	72
TA4025	40	50	25	3410	91
TA4030	40	50	30	4100	110
TA4040	40	50	40	5080	147
TA4520	45	55	20	2910	80
TA4525	45	55	25	3690	102
TA4530	45	55	30	4430	123
TA4540	45	55	40	5510	164



型號	主要寸法			基本定格荷重	重量
	dr	D	B		
TA5012	50	62	12	1790	58
TA5015	50	62	15	2490	67.5
TA5020	50	62	20	3560	104
TA5025	50	62	25	4540	133
TA5030	50	62	30	5470	162
TA5040	50	62	40	6820	215
TAW5045	50	62	45	7130	235
TA5520	55	67	20	3730	113
TA5525	55	67	25	4760	144
TA5530	55	67	30	5720	175
TA5540	55	67	40	7150	235
TA5545	55	67	45	7470	255
TA5550	55	67	50	8490	290
TA6025	60	72	25	5090	157
TA6030	60	72	30	6120	191
TA6040	60	72	40	7660	255
TAW6045	60	72	45	7990	280
TAW6050	60	72	50	9090	325
TA6212	62	74	12	2030	70.5
RA6525	65	77	25	5230	168
TA6530	65	77	30	6290	205
TAW6545	65	77	45	8200	300
TAW6550	65	77	50	9330	340
TA7025	70	82	25	5420	179
TA7030	70	82	30	6520	220
TA7040	70	82	40	8200	290
TAW7050	70	82	50	9670	360



型號	主要寸法			基本定格荷重	重量
	dr	D	B	C	
TLA48	4	8	8	150	1.54
TLA59	5	9	9	210	2
TLA69	6	10	9	230	2.3
TLA79	7	11	9	270	2.6
TLA810	8	12	10	350	3.3
TLA910	9	13	10	370	3.6
TLA912	9	13	12	450	4.3
TLA1010	10	14	10	410	3.9
TLA1012	10	14	12	500	4.7
TLA1015	10	14	15	630	6
TLA1210	12	16	10	460	4.6
TLA1212	12	18	12	610	9.1
TLA1312	13	19	12	640	6.7
TLA1412	14	20	12	670	10.3
TLA1416	14	20	16	870	13.8
TLA1512	15	21	12	700	10.9
TLA1516	15	21	16	900	14.7
TLA1522	15	21	22	1280	20.5
TLA1612	16	22	12	730	11.5
TLA1616	16	22	16	940	15.6
TLA1622	16	22	22	1330	21.5
TLA1712	17	23	12	750	12.1
TLA1812	18	24	12	780	12.7
TLA1816	18	24	16	1000	17.2
TLA2012	20	26	12	820	13.9
TLA2016	20	26	16	1070	18.8
TLA2020	20	26	20	1370	23.5
TLA2030	20	26	30	2050	36



型號	主要寸法			基本定格荷重	重量
	dr	D	B	C	
TLA2212	22	28	12	870	15.1
TLA2216	22	28	16	1130	20.5
TLA2220	22	28	20	1450	25.5
TLA2512	25	32	12	960	20
TLA2516	25	32	16	1250	27
TLA2520	25	32	20	1610	34
TLA2526	25	32	26	2110	44.5
TLAW2538	25	32	38	2760	63.5
TLA2816	28	35	16	1360	30
TLA2820	28	35	20	1740	38
TLA3012	30	37	12	1060	23.5
TLA3016	30	37	16	1380	32
TLA3018	30	37	18	1580	36
TLA3020	30	37	20	1780	40
TLA3026	30	37	26	2330	52.5
TLAW3038	30	37	38	3040	74.5
TLA3512	35	42	12	1170	27
TLA3516	35	42	16	1530	37
TLA3520	35	42	20	1970	46.5
TLA4012	40	47	12	1260	30.5
TLA4016	40	47	16	1640	41.5
TLA4020	40	47	20	2110	51
TLA4516	45	52	16	1730	46
TLA4520	45	52	20	2230	58
TLA5020	50	58	20	2730	72.5
TLA5025	50	58	25	3450	92
TLA5520	55	63	20	2830	80.5
TLA5525	55	63	25	3580	101

